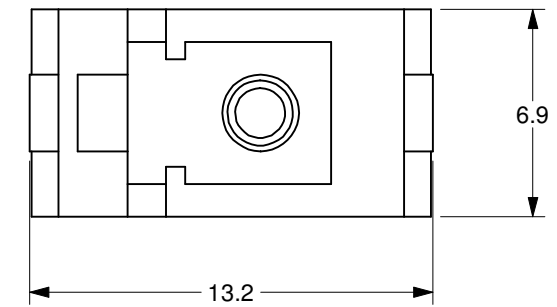
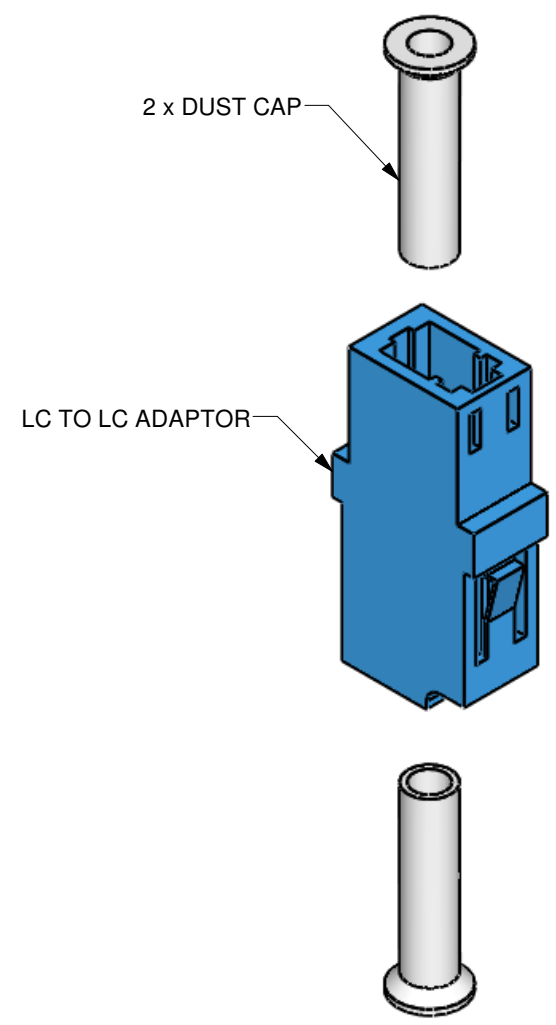

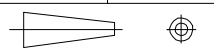


RECOMMENDED PANEL OPENING



DIMENSIONS ARE IN MILLIMETERS.

DRAWN BY: KOOSHA-SINA	DATE: 2/04/14	UNLESS NOTED OTHERWISE, DIMENSIONS ARE IN MILLIMETERS, INCHES ARE IN SQUARE BRACKETS, AND TOLERANCES APPLY AS SHOWN BELOW.	 OZ Optics 219 WESTBROOK ROAD OTTAWA, ONTARIO CANADA K0A 1L0 www.ozoptics.com		PART BARCODE #.											
CHECKED BY:	DATE:				4759											
M/S CHECKED BY:	DATE:	<table border="1"> <tr><th colspan="3">INCHES</th></tr> <tr><td>BASIC DIMENSION</td><td>.XX</td><td>.XXX</td></tr> <tr><td>BELOW 4</td><td>±.01</td><td>±.005</td></tr> <tr><td>OVER 4</td><td>±.02</td><td>±.01</td></tr> </table>	INCHES			BASIC DIMENSION	.XX	.XXX	BELOW 4	±.01	±.005	OVER 4	±.02	±.01	DESC. LC/LC sleeve thru adaptor	
INCHES																
BASIC DIMENSION	.XX	.XXX														
BELOW 4	±.01	±.005														
OVER 4	±.02	±.01														
APVD BY:	DATE:	<table border="1"> <tr><th colspan="3">MILLIMETERS</th></tr> <tr><td>BASIC DIMENSION</td><td>.X</td><td>.XX</td></tr> <tr><td>BELOW 101.6</td><td>±.25</td><td>±.10</td></tr> <tr><td>OVER 101.6</td><td>±.50</td><td>±.20</td></tr> </table>	MILLIMETERS			BASIC DIMENSION	.X	.XX	BELOW 101.6	±.25	±.10	OVER 101.6	±.50	±.20	PART NO. BULK-0LC-S	
MILLIMETERS																
BASIC DIMENSION	.X	.XX														
BELOW 101.6	±.25	±.10														
OVER 101.6	±.50	±.20														
PROJECTION: 		<table border="1"> <tr><th colspan="3">ANGULAR DIMENSIONS</th></tr> <tr><td>BASIC DIMENSION</td><td>X</td><td>X.X</td></tr> <tr><td>ALL ANGLES</td><td>±2.5°</td><td>±0.5°</td></tr> </table>	ANGULAR DIMENSIONS			BASIC DIMENSION	X	X.X	ALL ANGLES	±2.5°	±0.5°	SIZE: B	DWG.# 3000-0261	SHEET 1 OF 1	SCALE: 4:1	
ANGULAR DIMENSIONS																
BASIC DIMENSION	X	X.X														
ALL ANGLES	±2.5°	±0.5°														
CONFIDENTIAL THIS PRINT IS THE EXCLUSIVE PROPERTY OF OZ OPTICS AND MUST BE RETURNED UPON REQUEST. UNAUTHORIZED USE, MANUFACTURE OR REPRODUCTION IN WHOLE OR IN PART IS PROHIBITED.		SURFACE FINISH	MILLED 125u	PROFILED 63u	REV N/A											