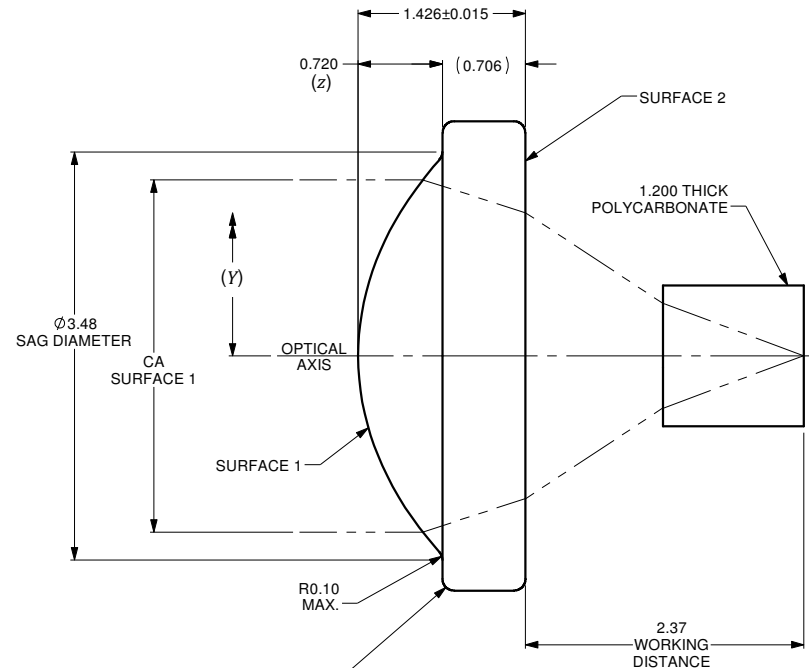
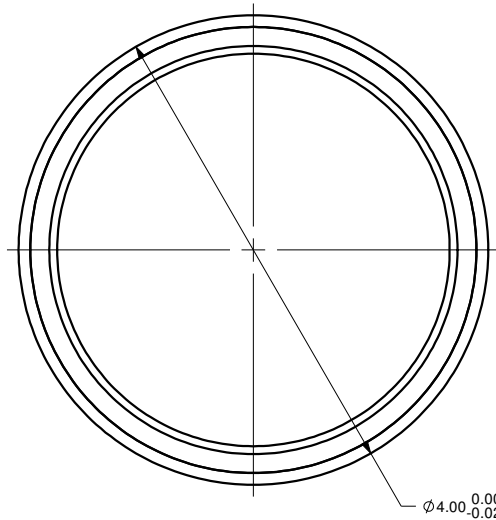


$$z = \frac{Y^2}{R \left( 1 + \sqrt{1 - (1+k) \frac{Y^2}{R^2}} \right)} + A_4 Y^4 + A_6 Y^6 + \dots + A_n Y^n$$

	SURFACE 1	SURFACE 2
SURFACE TYPE	ASPHERIC	PLANO
CLEAR APERTURE (CA)	ø3.00mm	ø2.44mm MIN.
RADIUS OF CURVATURE	2.16497	INF.
k	-1.12249	0
A <sub>4</sub>	7.50357E-003	0
A <sub>6</sub>	1.19911E-004	0
A <sub>8</sub>	-9.99584E-006	0
A <sub>10</sub>	-2.53542E-006	0
A <sub>12</sub>	-1.25139E-007	0
A <sub>14</sub>	0	0

VARIABLES	
z	SURFACE PROFILE
Y	DISTANCE FROM OPTICAL AXIS
R	RADIUS OF CURVATURE
k	CONIC CONSTANT
A <sub>4</sub>	4th ORDER ASPHERIC COEFFICIENT
A <sub>6</sub>	6th ORDER ASPHERIC COEFFICIENT
A <sub>n</sub>	nth ORDER ASPHERIC COEFFICIENT


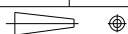


CORNERS ARE NOT SHARP  
RADIUS REPRESENTATIVE ONLY

NUMERICAL APERTURE	0.55
EFFECTIVE FOCAL LENGTH	2.73mm

**NOTES :**

- MATERIAL: D-ZLAF52LA
- WAVEFRONT ABERRATION (RMS): <0.05λ @ 632.8nm
- AR COATING: 1000-1650 nm  
REFLECTIVITY R<sub>max</sub> <1.00%

ALL DIMENSIONS ARE IN MILLIMETERS		A	N/A	ORIGINAL ISSUE	C.M.	10-SEP-2019													
DRAWN BY: P. SUMMERS	DATE: 9/10/2019	REV.	ECR REF#	DESCRIPTION	ENG. BY	DATE													
CHECKED BY:	DATE:	UNLESS NOTED OTHERWISE, DIMENSIONS ARE IN MILLIMETERS. INCHES ARE IN SQUARE BRACKETS AND TOLERANCES APPLY AS SHOWN BELOW.				PART BARCODE #: <b>2055</b>													
M/S CHECKED BY:	DATE:	<table border="1"> <thead> <tr> <th colspan="2">INCHES</th> </tr> <tr> <th>BASIC DIMENSION</th> <th>DECIMAL PLACES</th> </tr> </thead> <tbody> <tr> <td>XXX</td> <td>XXX</td> </tr> <tr> <td>BELOW 4</td> <td>±.005</td> </tr> <tr> <td>OVER 4</td> <td>±.01</td> </tr> </tbody> </table>				INCHES		BASIC DIMENSION	DECIMAL PLACES	XXX	XXX	BELOW 4	±.005	OVER 4	±.01	 <p>219 WESTBROOK ROAD OTTAWA, ONTARIO CANADA K6A 1L0</p> <p><a href="http://www.ozoptics.com">www.ozoptics.com</a></p>			
INCHES																			
BASIC DIMENSION	DECIMAL PLACES																		
XXX	XXX																		
BELOW 4	±.005																		
OVER 4	±.01																		
AP/VD BY:	DATE:	<table border="1"> <thead> <tr> <th colspan="2">MILLIMETERS</th> </tr> <tr> <th>BASIC DIMENSION</th> <th>DECIMAL PLACES</th> </tr> </thead> <tbody> <tr> <td>XX</td> <td>XX</td> </tr> <tr> <td>BELOW 10.0</td> <td>±.25</td> </tr> <tr> <td>OVER 10.0</td> <td>±.50</td> </tr> <tr> <td>OVER 101.6</td> <td>±.20</td> </tr> </tbody> </table>				MILLIMETERS		BASIC DIMENSION	DECIMAL PLACES	XX	XX	BELOW 10.0	±.25	OVER 10.0	±.50	OVER 101.6	±.20	<p><b>ASPHERIC LENS</b> f=2.7mm, OD=4mm. AR COATED FOR 1000-1650nm</p>	
MILLIMETERS																			
BASIC DIMENSION	DECIMAL PLACES																		
XX	XX																		
BELOW 10.0	±.25																		
OVER 10.0	±.50																		
OVER 101.6	±.20																		
PROJECTION:		<table border="1"> <thead> <tr> <th colspan="2">ANGULAR DIMENSIONS</th> </tr> <tr> <th>BASIC DIMENSION</th> <th>DECIMAL PLACES</th> </tr> </thead> <tbody> <tr> <td>X</td> <td>XX</td> </tr> <tr> <td>ALL ANGLES</td> <td>±0.5°</td> </tr> </tbody> </table>				ANGULAR DIMENSIONS		BASIC DIMENSION	DECIMAL PLACES	X	XX	ALL ANGLES	±0.5°	<p>AS-F2.7-D4-1000/1650</p>					
ANGULAR DIMENSIONS																			
BASIC DIMENSION	DECIMAL PLACES																		
X	XX																		
ALL ANGLES	±0.5°																		
<p>CONFIDENTIAL THIS PRINT IS THE EXCLUSIVE PROPERTY OF OZ OPTICS AND MUST BE RETURNED UPON REQUEST. UNAUTHORIZED USE, MANUFACTURE OR REPRODUCTION IN WHOLE OR IN PART IS PROHIBITED.</p>		<table border="1"> <thead> <tr> <th>SURFACE FINISH</th> <th>MILLED</th> <th>PROFILED</th> <th>SIZE:</th> <th>DWG.#</th> <th>SHEET</th> <th>SCALE</th> </tr> </thead> <tbody> <tr> <td></td> <td>125μ</td> <td>63μ</td> <td><b>B</b></td> <td>4000-0212</td> <td>1 OF 1</td> <td>24:1</td> </tr> </tbody> </table>		SURFACE FINISH	MILLED	PROFILED	SIZE:	DWG.#	SHEET	SCALE		125μ	63μ	<b>B</b>	4000-0212	1 OF 1	24:1	<p>REV: <b>A</b></p>	
SURFACE FINISH	MILLED	PROFILED	SIZE:	DWG.#	SHEET	SCALE													
	125μ	63μ	<b>B</b>	4000-0212	1 OF 1	24:1													