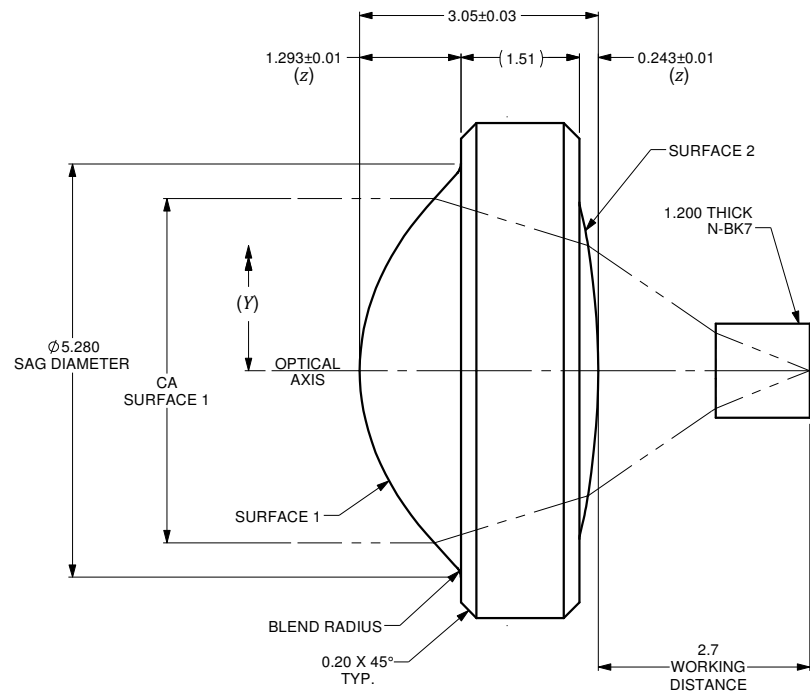
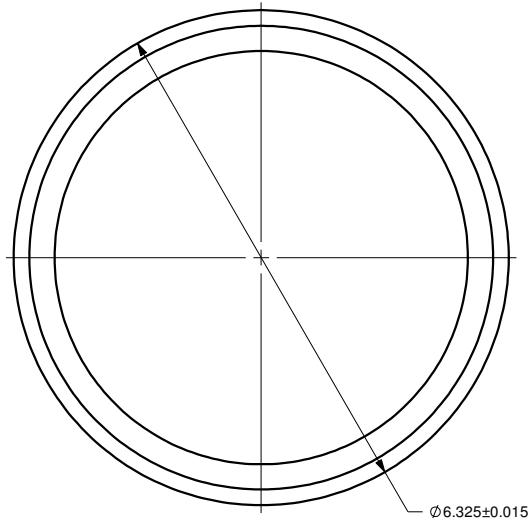


$$z = \frac{Y^2}{R \left( 1 + \sqrt{1 - (1+k) \frac{Y^2}{R^2}} \right)} + A_4 Y^4 + A_6 Y^6 + \dots + A_n Y^n$$

	SURFACE 1	SURFACE 2
SURFACE TYPE	ASPHERIC	ASPHERIC
CLEAR APERTURE (CA)	ø4.40mm	ø4.00mm
RADIUS OF CURVATURE	2.71628	-7.89261
<i>k</i>	-1.08784	-2.06753
<i>A<sub>4</sub></i>	3.19041E-003	7.04741E-003
<i>A<sub>6</sub></i>	1.08648E-004	-5.41654E-004
<i>A<sub>8</sub></i>	-2.13936E-005	-3.56018E-004
<i>A<sub>10</sub></i>	4.03385E-006	7.96281E-005
<i>A<sub>12</sub></i>	-8.35205E-007	-5.60057E-006
<i>A<sub>14</sub></i>	0	0

VARIABLES	
<i>z</i>	SURFACE PROFILE
<i>Y</i>	DISTANCE FROM OPTICAL AXIS
<i>R</i>	RADIUS OF CURVATURE
<i>k</i>	CONIC CONSTANT
<i>A<sub>4</sub></i>	4th ORDER ASPHERIC COEFFICIENT
<i>A<sub>6</sub></i>	6th ORDER ASPHERIC COEFFICIENT
<i>A<sub>n</sub></i>	nth ORDER ASPHERIC COEFFICIENT



NUMERICAL APERTURE	0.56
EFFECTIVE FOCAL LENGTH	3.9mm

**NOTES :**

- MATERIAL: D-ZK3
- WAVEFRONT ABERRATION (RMS): <0.08λ @ 632.8nm
- AR COATING: 600-1050 nm  
REFLECTIVITY R<sub>max</sub> <1.00%

ALL DIMENSIONS ARE IN MILLIMETERS		A	N/A	ORIGINAL ISSUE	C.M.	17-SEP-2019																					
DRAWN BY: P. SUMMERS	DATE: 9/17/2019	REV.	ECR REF#	DESCRIPTION	ENG. BY	DATE																					
CHECKED BY:	DATE:	UNLESS NOTED OTHERWISE, DIMENSIONS ARE IN MILLIMETERS. INCHES ARE IN SQUARE BRACKETS AND TOLERANCES APPLY AS SHOWN BELOW.				PART BARCODE #: 533																					
M/S CHECKED BY:	DATE:	<table border="1"> <tr> <th colspan="2">INCHES</th> </tr> <tr> <td>BASIC DIMENSION</td> <td>DECIMAL PLACES</td> </tr> <tr> <td>BELOW .4</td> <td>.XX</td> </tr> <tr> <td>OVER .4</td> <td>.XXX</td> </tr> <tr> <td colspan="2">MILLIMETERS</td> </tr> <tr> <td>BASIC DIMENSION</td> <td>DECIMAL PLACES</td> </tr> <tr> <td>BELOW 10.0</td> <td>.X</td> </tr> <tr> <td>OVER 10.0</td> <td>.XX</td> </tr> <tr> <td>BELOW 101.6</td> <td>1.25</td> </tr> <tr> <td>OVER 101.6</td> <td>1.50</td> </tr> </table>				INCHES		BASIC DIMENSION	DECIMAL PLACES	BELOW .4	.XX	OVER .4	.XXX	MILLIMETERS		BASIC DIMENSION	DECIMAL PLACES	BELOW 10.0	.X	OVER 10.0	.XX	BELOW 101.6	1.25	OVER 101.6	1.50	219 WESTBROOK ROAD OTTAWA, ONTARIO CANADA K0A 1L0	
INCHES																											
BASIC DIMENSION	DECIMAL PLACES																										
BELOW .4	.XX																										
OVER .4	.XXX																										
MILLIMETERS																											
BASIC DIMENSION	DECIMAL PLACES																										
BELOW 10.0	.X																										
OVER 10.0	.XX																										
BELOW 101.6	1.25																										
OVER 101.6	1.50																										
AP/VD BY:	DATE:	<table border="1"> <tr> <th colspan="2">ANGULAR DIMENSIONS</th> </tr> <tr> <td>BASIC DIMENSION</td> <td>DECIMAL PLACES</td> </tr> <tr> <td>ALL ANGLES</td> <td>XX</td> </tr> <tr> <td></td> <td>XX.X</td> </tr> <tr> <td></td> <td>XX.XX</td> </tr> <tr> <td></td> <td>XX.XXX</td> </tr> </table>				ANGULAR DIMENSIONS		BASIC DIMENSION	DECIMAL PLACES	ALL ANGLES	XX		XX.X		XX.XX		XX.XXX										
ANGULAR DIMENSIONS																											
BASIC DIMENSION	DECIMAL PLACES																										
ALL ANGLES	XX																										
	XX.X																										
	XX.XX																										
	XX.XXX																										
PROJECTION:		DESC: ASPHERIC LENS f=3.9mm, OD=6.33mm. AR COATED FOR 600-1050nm				PART BARCODE #: 533																					
CONFIDENTIAL THIS PRINT IS THE EXCLUSIVE PROPERTY OF OZ OPTICS AND MUST BE RETURNED UPON REQUEST. UNAUTHORIZED USE, MANUFACTURE OR REPRODUCTION IN WHOLE OR IN PART IS PROHIBITED.		PART NO. AS-F3.9-D6.33-600/1050				REV. A																					
SURFACE FINISH		MILLED	PROFILED	SIZE: B	DWG.# 4000-0214	SHEET 1 OF 1	SCALE: 16:1																				