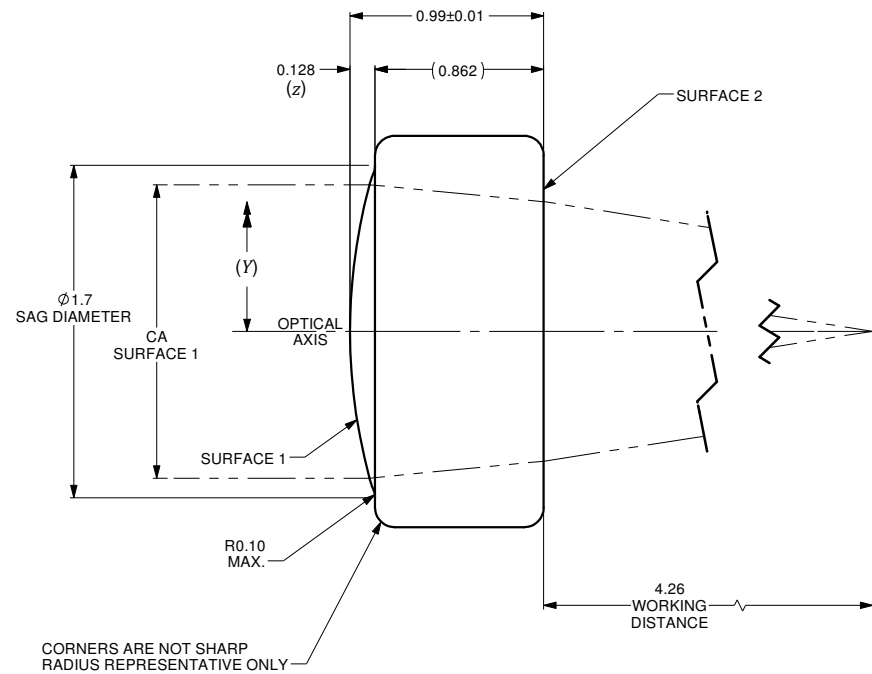
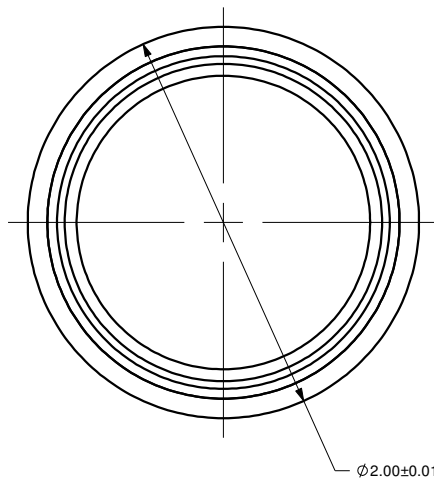


$$z = \frac{Y^2}{R \left(1 + \sqrt{1 - (1+k) \frac{Y^2}{R^2}} \right)} + A_4 Y^4 + A_6 Y^6 + \dots + A_n Y^n$$

	SURFACE 1	SURFACE 2
SURFACE TYPE	ASPHERIC	PLANO
CLEAR APERTURE (CA)	ø1.50mm	ø1.33mm MIN.
RADIUS OF CURVATURE	2.85347	INF.
<i>k</i>	-0.57885	0
<i>A₄</i>	0	0
<i>A₆</i>	0	0
<i>A₈</i>	0	0
<i>A₁₀</i>	0	0
<i>A₁₂</i>	0	0
<i>A₁₄</i>	0	0

VARIABLES	
<i>z</i>	SURFACE PROFILE
<i>Y</i>	DISTANCE FROM OPTICAL AXIS
<i>R</i>	RADIUS OF CURVATURE
<i>k</i>	CONIC CONSTANT
<i>A₄</i>	4th ORDER ASPHERIC COEFFICIENT
<i>A₆</i>	6th ORDER ASPHERIC COEFFICIENT
<i>A_n</i>	nth ORDER ASPHERIC COEFFICIENT



NUMERICAL APERTURE	0.15
EFFECTIVE FOCAL LENGTH	4.9mm

NOTES :

- MATERIAL: D-ZK3
REFLECTIVITY R_{avg} ≤0.50%
- WAVEFRONT ABERRATION (RMS): <0.07λ @ 632.8nm
- AR COATING: 375-650 nm

ALL DIMENSIONS ARE IN MILLIMETERS		A		N/A	ORIGINAL ISSUE	C.M.	10-SEP-2019
DRAWN BY:	P. SUMMERS	DATE:	9/10/2019	REV.	ECR REF#	DESCRIPTION	ENG. BY
CHECKED BY:		DATE:		UNLESS NOTED OTHERWISE, DIMENSIONS ARE IN MILLIMETERS, INCHES ARE IN SQUARE BRACKETS, AND TOLERANCES APPLY AS SHOWN BELOW.			
M/S CHECKED BY:		DATE:		INCHES			
AP/VD BY:		DATE:		DECIMAL PLACES			
PROJECTION:				BASIC DIMENSION			
				MILLIMETERS			
				ANGULAR DIMENSIONS			
				SURFACE FINISH			
				PART NO.			
				DESC:			
				REV			

219 WESTBROOK ROAD
OTTAWA, ONTARIO
CANADA K6A 1L0

www.ozoptics.com

4512

ASPHERIC LENS
f=5mm, OD=2mm. AR COATED FOR 375-650nm

AS-F5-D2-375/650

PART BARCODE #

4512

SIZE: B	DWG.# 4000-0216	SHEET 1 OF 1	SCALE: 40:1
----------------	-----------------	--------------	-------------