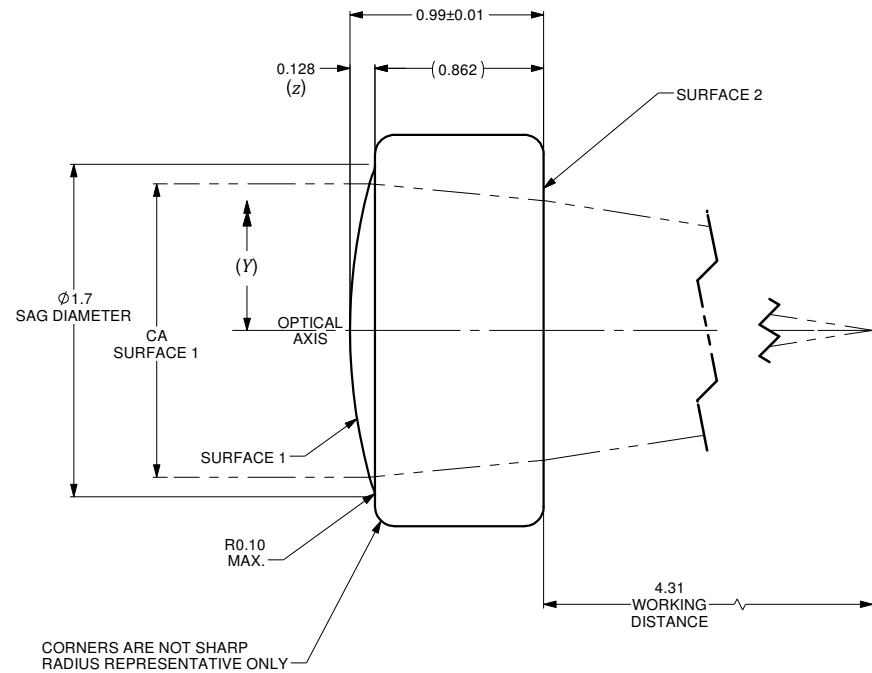
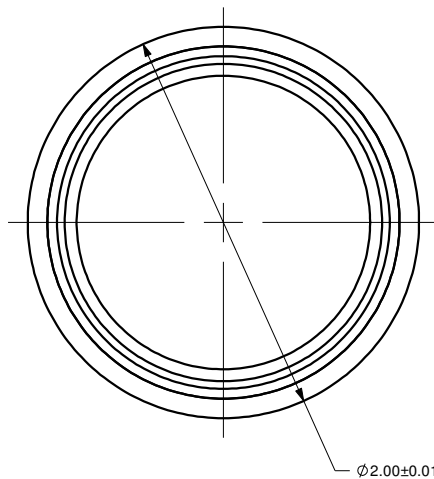


$$z = \frac{Y^2}{R \left( 1 + \sqrt{1 - (1+k) \frac{Y^2}{R^2}} \right)} + A_4 Y^4 + A_6 Y^6 + \dots + A_n Y^n$$

	SURFACE 1	SURFACE 2
SURFACE TYPE	ASPHERIC	PLANO
CLEAR APERTURE (CA)	ø1.50mm	ø1.33mm MIN.
RADIUS OF CURVATURE	2.85347	INF.
<i>k</i>	-0.57885	0
<i>A<sub>4</sub></i>	0	0
<i>A<sub>6</sub></i>	0	0
<i>A<sub>8</sub></i>	0	0
<i>A<sub>10</sub></i>	0	0
<i>A<sub>12</sub></i>	0	0
<i>A<sub>14</sub></i>	0	0



VARIABLES	
<i>z</i>	SURFACE PROFILE
<i>Y</i>	DISTANCE FROM OPTICAL AXIS
<i>R</i>	RADIUS OF CURVATURE
<i>k</i>	CONIC CONSTANT
<i>A<sub>4</sub></i>	4th ORDER ASPHERIC COEFFICIENT
<i>A<sub>6</sub></i>	6th ORDER ASPHERIC COEFFICIENT
<i>A<sub>n</sub></i>	nth ORDER ASPHERIC COEFFICIENT

NUMERICAL APERTURE	0.15
EFFECTIVE FOCAL LENGTH	4.9mm

**NOTES :**

- 1) MATERIAL: D-ZK3
- 2) WAVEFRONT ABERRATION (RMS): <0.07λ @ 632.8nm
- 3) AR COATING: 600-1050 nm  
REFLECTIVITY R<sub>max</sub> <1.00%

<b>ALL DIMENSIONS ARE IN MILLIMETERS</b>		A		N/A		ORIGINAL ISSUE		C.M.		11-SEP-2019	
REV.	ECR REF#	DESCRIPTION		ENG. BY	DATE						
DRAWN BY: P. SUMMERS		DATE: 9/11/2019		UNLESS NOTED OTHERWISE, DIMENSIONS ARE IN MILLIMETERS. INCHES ARE IN SQUARE BRACKETS AND TOLERANCES APPLY AS SHOWN BELOW.		INCHES		DECIMAL PLACES		PART BARCODE #	
CHECKED BY:		DATE:		BASIC DIMENSION		X		XX		4514	
M/S CHECKED BY:		DATE:		BELOW 4		±.01		±.005		219 WESTBROOK ROAD OTTAWA, ONTARIO CANADA K6A 1L0	
AP/VD BY:		DATE:		OVER 4		±.02		±.01		www.ozoptics.com	
PROJECTION:		DATE:		MILLIMETERS		BASIC DIMENSION		X		DESC: ASPHERIC LENS	
				BELOW 101.6		±.25		±.10		f=5mm, OD=2mm. AR COATED FOR 600-1050nm	
				OVER 101.6		±.50		±.20		PART NO. AS-F5-D2-600/1050	
				ANGULAR DIMENSIONS		BASIC DIMENSION		X		REV. A	
				ALL ANGLES		±2.5°		±0.5°		4000-0217	
CONFIDENTIAL THIS PRINT IS THE EXCLUSIVE PROPERTY OF OZ OPTICS AND MUST BE RETURNED UPON REQUEST. UNAUTHORIZED USE, MANUFACTURE OR REPRODUCTION IN WHOLE OR IN PART IS PROHIBITED.		SURFACE FINISH		MILLED		PROFILED		SIZE: B		DWG.# 4000-0217	
				125μ		63μ		SHEET 1 OF 1		SCALE: 40:1	

A  
4000-0217