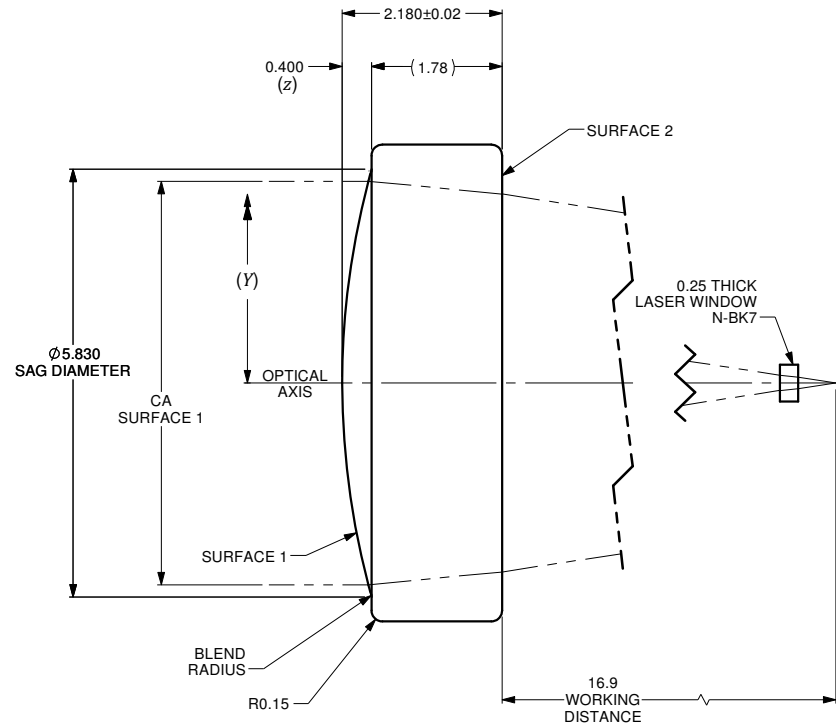
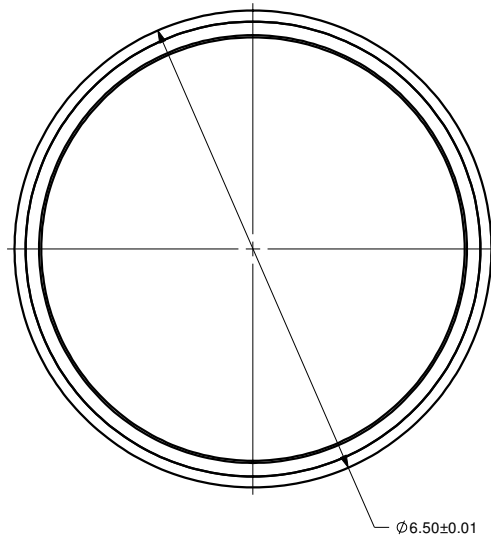


$$z = \frac{Y^2}{R \left(1 + \sqrt{1 - (1+k) \frac{Y^2}{R^2}} \right)} + A_4 Y^4 + A_6 Y^6 + \dots + A_n Y^n$$

	SURFACE 1	SURFACE 2
SURFACE TYPE	ASPHERIC	PLANO
CLEAR APERTURE (CA)	ø5.50mm	ø5.15mm MIN.
RADIUS OF CURVATURE	10.65991mm	INF.
k	-0.68649E005	0
A ₄	1.04606E-005	0
A ₆	0	0
A ₈	0	0
A ₁₀	0	0
A ₁₂	0	0
A ₁₄	0	0

VARIABLES	
z	SURFACE PROFILE
Y	DISTANCE FROM OPTICAL AXIS
R	RADIUS OF CURVATURE
k	CONIC CONSTANT
A ₄	4th ORDER ASPHERIC COEFFICIENT
A ₆	6th ORDER ASPHERIC COEFFICIENT
A _n	nth ORDER ASPHERIC COEFFICIENT



NUMERICAL APERTURE	0.15
EFFECTIVE FOCAL LENGTH	18.16mm

NOTES :

- MATERIAL: D-ZK3
- WAVEFRONT ABERRATION (RMS): <0.08λ @ 632.8nm
- AR COATING: 375-650 nm
REFLECTIVITY R_{avg} ≤0.50%

ALL DIMENSIONS ARE IN MILLIMETERS		A	N/A	ORIGINAL ISSUE	C.M.	17-SEP-2019									
DRAWN BY: P. SUMMERS	DATE: 9/17/2019	REV.	ECR REF#	DESCRIPTION	ENG. BY	DATE									
CHECKED BY:	DATE:	UNLESS NOTED OTHERWISE, DIMENSIONS ARE IN MILLIMETERS. INCHES ARE IN SQUARE BRACKETS, AND TOLERANCES APPLY AS SHOWN BELOW.				PART BARCODE #: 17173									
M/S CHECKED BY:	DATE:	<table border="1"> <tr> <th colspan="2">INCHES</th> </tr> <tr> <td>BASIC DIMENSION</td> <td>DECIMAL PLACES</td> </tr> <tr> <td>BELOW .4</td> <td>.XX</td> </tr> <tr> <td>OVER .4</td> <td>1.00, 1.50, 2.00</td> </tr> </table>				INCHES		BASIC DIMENSION	DECIMAL PLACES	BELOW .4	.XX	OVER .4	1.00, 1.50, 2.00	219 WESTBROOK ROAD OTTAWA, ONTARIO CANADA K0A 1L0	
INCHES															
BASIC DIMENSION	DECIMAL PLACES														
BELOW .4	.XX														
OVER .4	1.00, 1.50, 2.00														
AP/VD BY:	DATE:	<table border="1"> <tr> <th colspan="2">MILLIMETERS</th> </tr> <tr> <td>BASIC DIMENSION</td> <td>DECIMAL PLACES</td> </tr> <tr> <td>BELOW 10.0</td> <td>.XX</td> </tr> <tr> <td>OVER 10.0</td> <td>1.25, 1.50, 2.00</td> </tr> </table>				MILLIMETERS		BASIC DIMENSION	DECIMAL PLACES	BELOW 10.0	.XX	OVER 10.0	1.25, 1.50, 2.00		
MILLIMETERS															
BASIC DIMENSION	DECIMAL PLACES														
BELOW 10.0	.XX														
OVER 10.0	1.25, 1.50, 2.00														
PROJECTION:		<table border="1"> <tr> <th colspan="2">ANGULAR DIMENSIONS</th> </tr> <tr> <td>BASIC DIMENSION</td> <td>DECIMAL PLACES</td> </tr> <tr> <td>ALL ANGLES</td> <td>12.5°, 10.0°</td> </tr> </table>				ANGULAR DIMENSIONS		BASIC DIMENSION	DECIMAL PLACES	ALL ANGLES	12.5°, 10.0°	ASPHERIC LENS f=18mm, OD=6.5mm. AR COATED FOR 375-650nm			
ANGULAR DIMENSIONS															
BASIC DIMENSION	DECIMAL PLACES														
ALL ANGLES	12.5°, 10.0°														
CONFIDENTIAL THIS PRINT IS THE EXCLUSIVE PROPERTY OF OZ OPTICS AND MUST BE RETURNED UPON REQUEST. UNAUTHORIZED USE, MANUFACTURE OR REPRODUCTION IN WHOLE OR IN PART IS PROHIBITED.		SURFACE FINISH: <table border="1"> <tr> <td>MILLED</td> <td>PROFLED</td> </tr> <tr> <td>125μ</td> <td>63μ</td> </tr> </table>		MILLED	PROFLED	125μ	63μ	PART NO. AS-F18-D6.5-375/650 SCALE: A							
MILLED	PROFLED														
125μ	63μ														
		SIZE: B	DWG.#: 4000-0234	SHEET 1 OF 1	SCALE: 15:1										