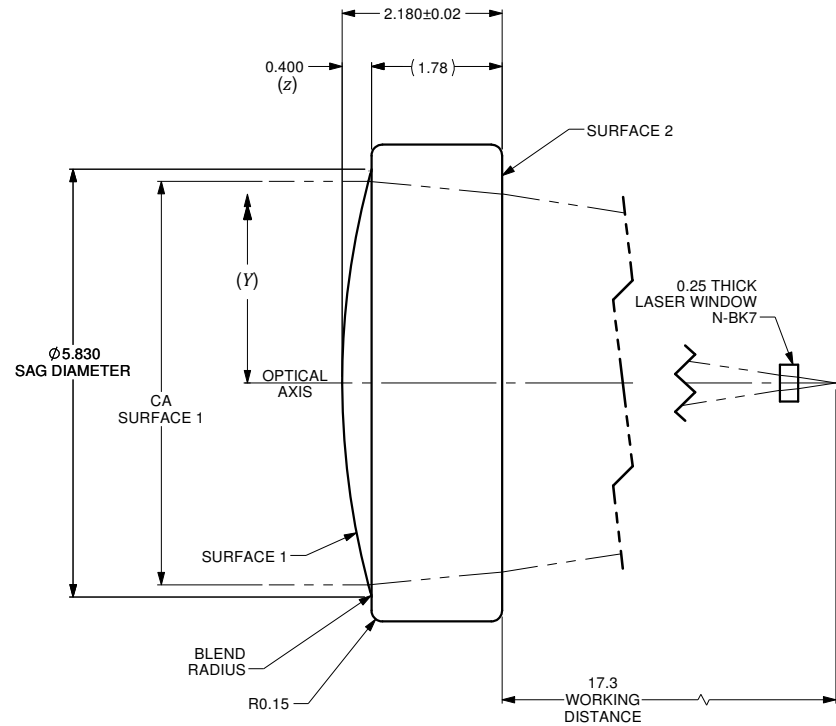
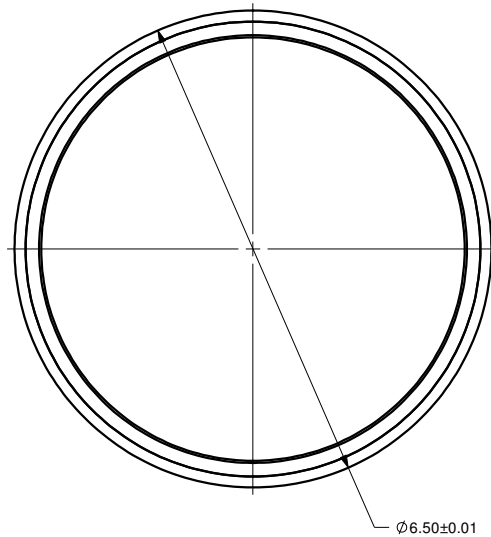


$$z = \frac{Y^2}{R \left(1 + \sqrt{1 - (1+k) \frac{Y^2}{R^2}} \right)} + A_4 Y^4 + A_6 Y^6 + \dots + A_n Y^n$$

	SURFACE 1	SURFACE 2
SURFACE TYPE	ASPHERIC	PLANO
CLEAR APERTURE (CA)	ø5.50mm	ø5.15mm MIN.
RADIUS OF CURVATURE	10.65991mm	INF.
k	-0.68649E005	0
A_4	1.04606E-005	0
A_6	0	0
A_8	0	0
A_{10}	0	0
A_{12}	0	0
A_{14}	0	0

VARIABLES	
z	SURFACE PROFILE
Y	DISTANCE FROM OPTICAL AXIS
R	RADIUS OF CURVATURE
k	CONIC CONSTANT
A_4	4th ORDER ASPHERIC COEFFICIENT
A_6	6th ORDER ASPHERIC COEFFICIENT
A_n	nth ORDER ASPHERIC COEFFICIENT



NUMERICAL APERTURE	0.15
EFFECTIVE FOCAL LENGTH	18.57mm

NOTES :

- 1) MATERIAL: D-ZK3
- 2) WAVEFRONT ABERRATION (RMS): <0.08λ @ 632.8nm
- 3) AR COATING: 1000-1650 nm
REFLECTIVITY R_{max} <1.00%

A		N/A		ORIGINAL ISSUE		C.M.		17-SEP-2019																																			
REV.	ECR REF#	DESCRIPTION				ENG. BY	DATE																																				
<p>ALL DIMENSIONS ARE IN MILLIMETERS</p> <p>UNLESS NOTED OTHERWISE, DIMENSIONS ARE IN MILLIMETERS, INCHES ARE IN SQUARE BRACKETS, AND TOLERANCES APPLY AS SHOWN BELOW.</p> <table border="1"> <thead> <tr> <th colspan="2">INCHES</th> <th colspan="2">MILLIMETERS</th> </tr> <tr> <th>BASIC DIMENSION</th> <th>DECIMAL PLACES</th> <th>BASIC DIMENSION</th> <th>DECIMAL PLACES</th> </tr> </thead> <tbody> <tr> <td>XX</td> <td>.XX</td> <td>X</td> <td>.XX</td> </tr> <tr> <td>BELOW 4</td> <td>±.01</td> <td>±.01</td> <td>±.008</td> </tr> <tr> <td>OVER 4</td> <td>±.02</td> <td>±.02</td> <td>±.01</td> </tr> </tbody> </table> <p>ANGULAR DIMENSIONS</p> <table border="1"> <thead> <tr> <th>BASIC DIMENSION</th> <th>DECIMAL PLACES</th> </tr> </thead> <tbody> <tr> <td>X</td> <td>.XX</td> </tr> <tr> <td>ALL ANGLES</td> <td>±2.5°</td> </tr> <tr> <td>±0.5°</td> <td></td> </tr> </tbody> </table> <p>SURFACE FINISH</p> <table border="1"> <thead> <tr> <th>MILLED</th> <th>PROFILED</th> <th>SIZE</th> </tr> </thead> <tbody> <tr> <td>125μ</td> <td>63μ</td> <td>B</td> </tr> </tbody> </table>										INCHES		MILLIMETERS		BASIC DIMENSION	DECIMAL PLACES	BASIC DIMENSION	DECIMAL PLACES	XX	.XX	X	.XX	BELOW 4	±.01	±.01	±.008	OVER 4	±.02	±.02	±.01	BASIC DIMENSION	DECIMAL PLACES	X	.XX	ALL ANGLES	±2.5°	±0.5°		MILLED	PROFILED	SIZE	125μ	63μ	B
INCHES		MILLIMETERS																																									
BASIC DIMENSION	DECIMAL PLACES	BASIC DIMENSION	DECIMAL PLACES																																								
XX	.XX	X	.XX																																								
BELOW 4	±.01	±.01	±.008																																								
OVER 4	±.02	±.02	±.01																																								
BASIC DIMENSION	DECIMAL PLACES																																										
X	.XX																																										
ALL ANGLES	±2.5°																																										
±0.5°																																											
MILLED	PROFILED	SIZE																																									
125μ	63μ	B																																									
<p>219 WESTBROOK ROAD OTTAWA, ONTARIO CANADA K6A 1L0</p> <p>www.ozoptics.com</p>						<p>PART BARCODE #</p> <p>15117</p>																																					
<p>ASPHERIC LENS</p> <p>f=18mm, OD=6.5mm. AR COATED FOR 1000-1650nm</p>						<p>DESC:</p> <p>AS-F18-D6.5-1000/1650</p>																																					
<p>CONFIDENTIAL THIS PRINT IS THE EXCLUSIVE PROPERTY OF OZ OPTICS AND MUST BE RETURNED UPON REQUEST. UNAUTHORIZED USE, MANUFACTURE OR REPRODUCTION IN WHOLE OR IN PART IS PROHIBITED.</p>						<p>PART NO.</p> <p>4000-0236</p>																																					
<p>PROJECTION:</p>						<p>SCALE</p> <p>15:1</p>																																					
<p>REV</p> <p>A</p>						<p>SHEET 1 OF 1</p>																																					